

# ASTECC

ASPERGILLUS TECHNOLOGY CONSORTIUM

## Clinical Laboratory Diagnostics for Invasive Aspergillosis

**John Wingard, MD**  
**AsTeC Principal Investigator**

NIH Contract - HHSN266200700023C

*IAAM*

INVASIVE ASPERGILLOSIS ANIMAL MODELS

# ASTECC

ASPERGILLUS TECHNOLOGY CONSORTIUM

# Goals of AsTeC Project

---

- Establish & maintain repository of clinical samples from pts at high risk for &/or infected with Invasive Aspergillosis
- Establish a network of laboratories compliant with Good Laboratory Practices to assess new diagnostic assays for Invasive Aspergillosis

IA = Invasive Aspergillosis

IAAM



INVASIVE ASPERGILLOSIS ANIMAL MODELS

ASTEC

ASPERGILLUS TECHNOLOGY CONSORTIUM



# Why is this important?

---

- Mortality from IA has been growing in US hospitalized patients
- Making the diagnosis is difficult
  - Diagnosis not confirmed by DRC in 26% of pts in large IA treatment trial
- Other pathogens produce similar clinical syndromes
- Current diagnostics have limitations
- Starting treatment early is associated with better outcomes
- Evaluating treatment responses is difficult

IAAM

INVASIVE ASPERGILLOSIS ANIMAL MODELS

ASTECC

ASPERGILLUS TECHNOLOGY CONSORTIUM

# AsTeC Project

## Project Officers

Christine Chou

Dennis Dixon

NIH-NIAID  
HHSN266200700023C  
RFP-NIH-NIAID-DMID-07-13

- Term: May 31, 2007- May 30, 2014

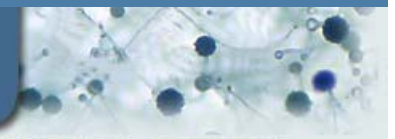
IAAM



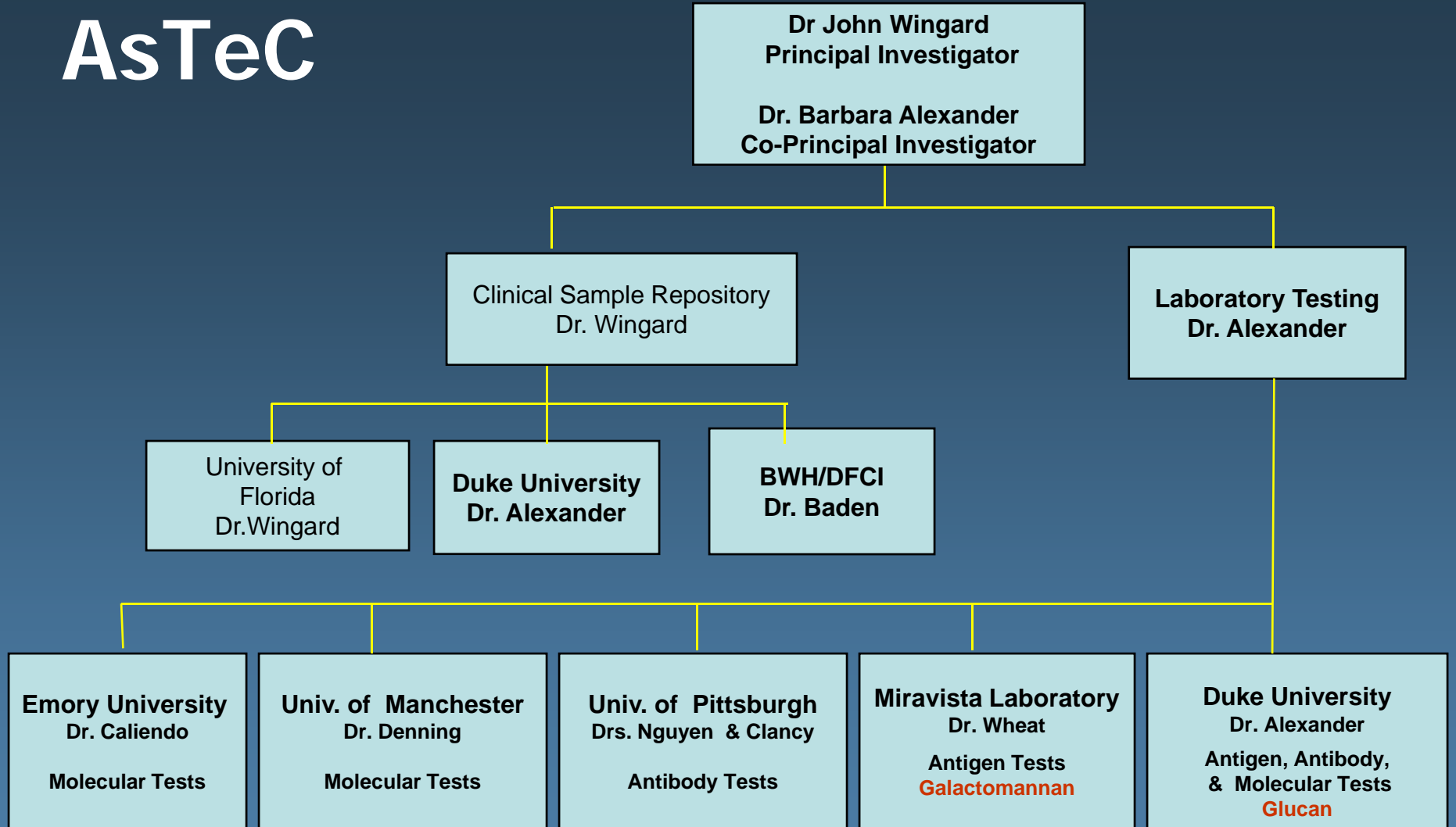
INVASIVE ASPERGILLOSIS ANIMAL MODELS

ASTEC

ASPERGILLUS TECHNOLOGY CONSORTIUM



# AsTeC



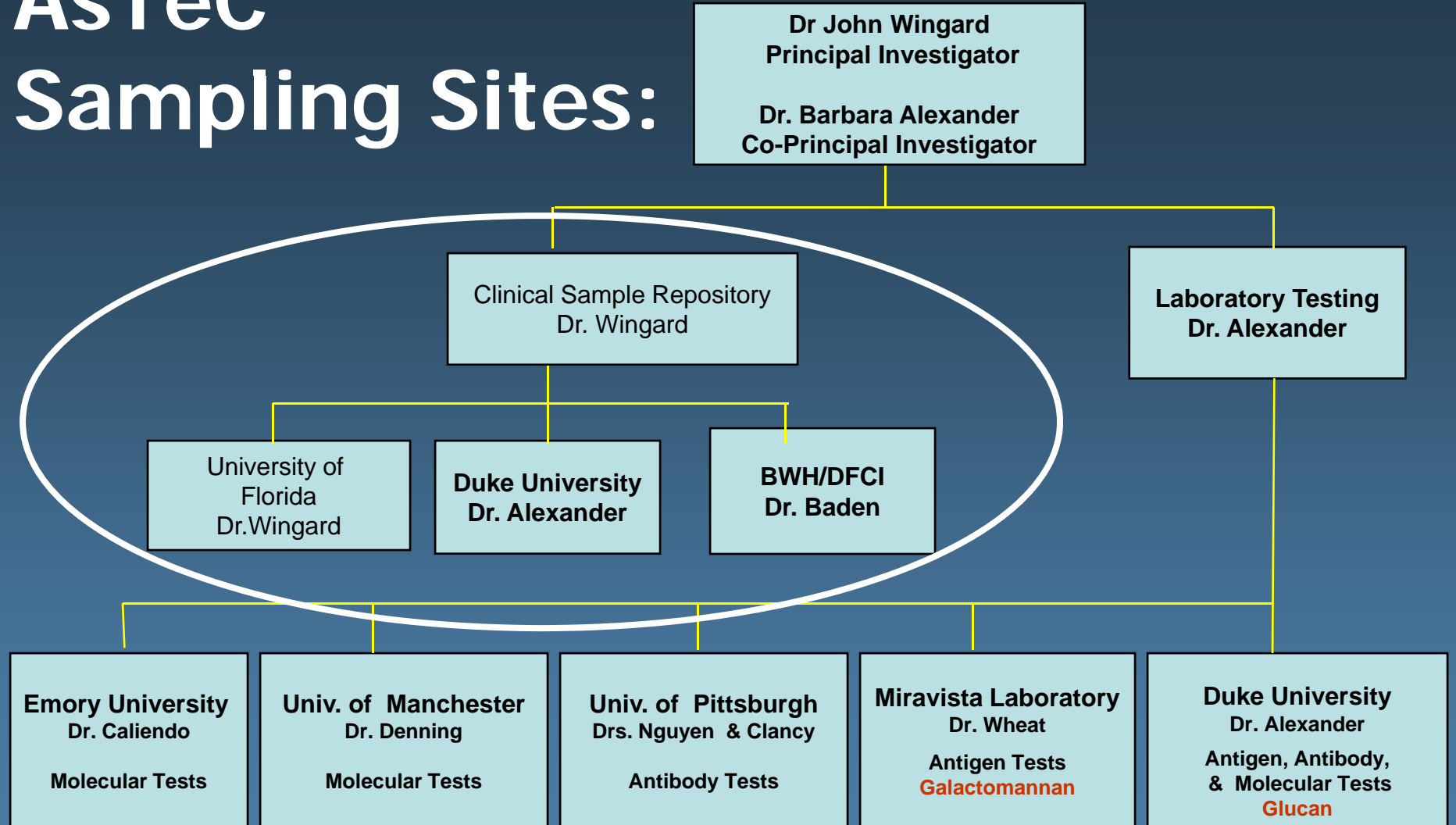
IAAM

INVASIVE ASPERGILLOSIS ANIMAL MODELS

ASTEC

ASPERGILLUS TECHNOLOGY CONSORTIUM

# AsTeC Sampling Sites:



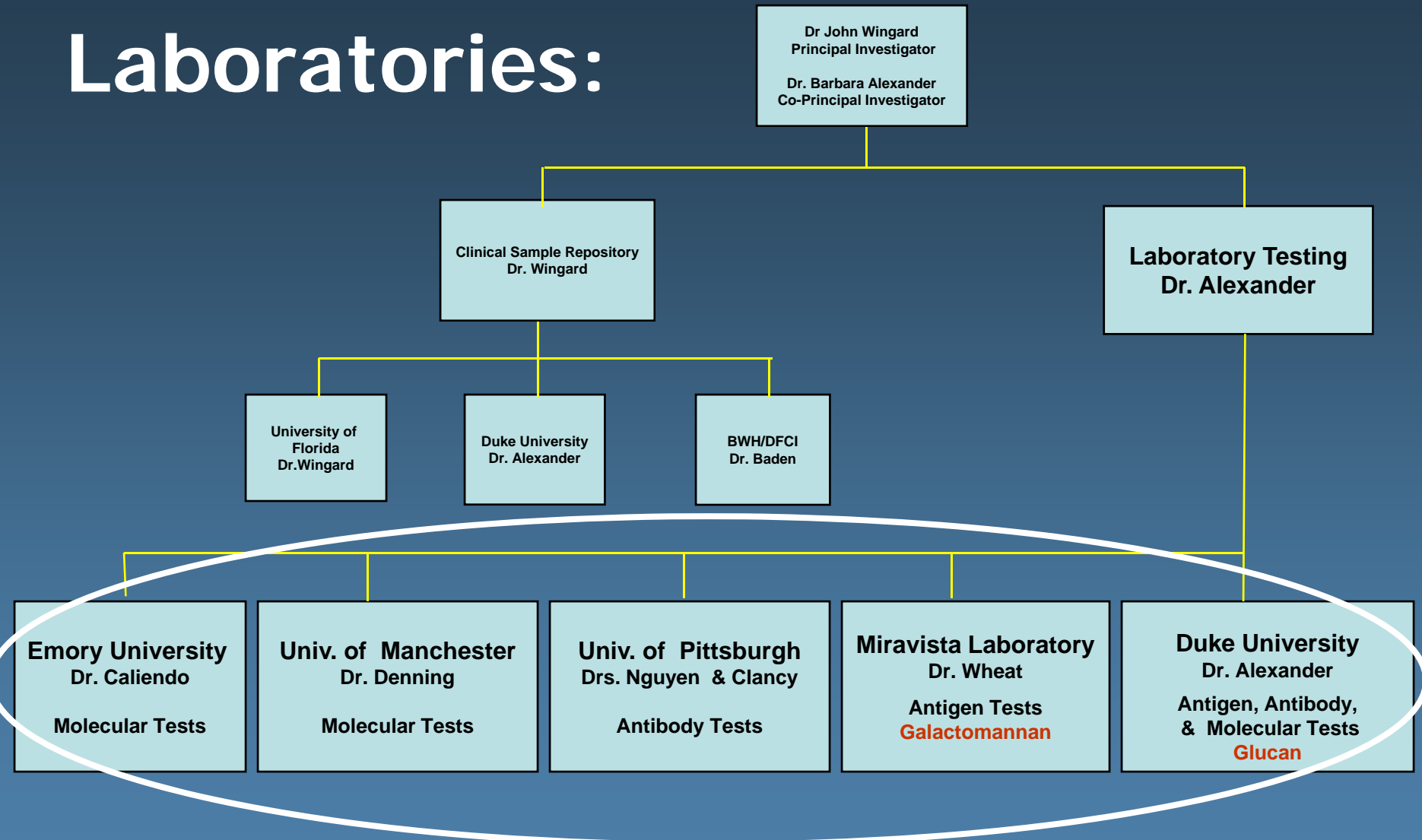
IAAM

INVASIVE ASPERGILLOSIS ANIMAL MODELS

ASTEC

ASPERGILLUS TECHNOLOGY CONSORTIUM

# AsTeC Laboratories:



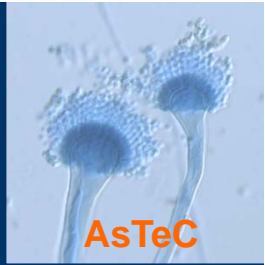
IAAM

INVASIVE ASPERGILLOSIS ANIMAL MODELS

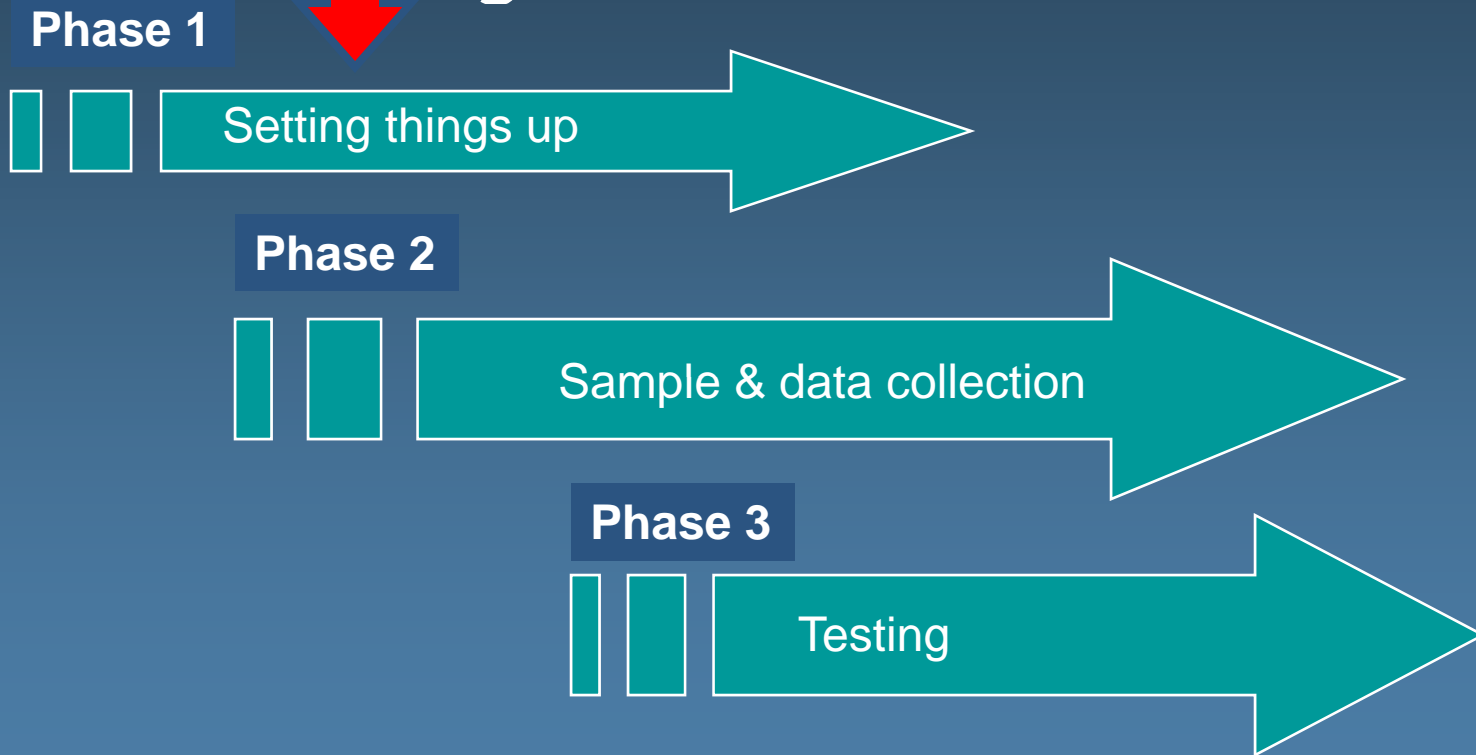
ASTEC

ASPERGILLUS TECHNOLOGY CONSORTIUM

Where we are now



# Project Timeline



IAAM

INVASIVE ASPERGILLOSIS ANIMAL MODELS

ASTEC

ASPERGILLUS TECHNOLOGY CONSORTIUM

# Interactions between AsTeC & IAAM

- Divided responsibilities for testing diagnostics
  - Early work with manufacturers: IAAM
  - Preparatory for licensure: AsTeC
- IAAM will provide standards for repeatability and reproducibility testing
- Coordinated meetings

IAAM

INVASIVE ASPERGILLOSIS ANIMAL MODELS

ASTEC

ASPERGILLUS TECHNOLOGY CONSORTIUM

# Websites

- **IAMM**

- [www.sacmm.org/iaam.html](http://www.sacmm.org/iaam.html)

- **AsTeC**

- [www.astediagnostics.org](http://www.astediagnostics.org)

*IAAM*

INVASIVE ASPERGILLOSIS ANIMAL MODELS

ASTEAC

ASPERGILLUS TECHNOLOGY CONSORTIUM

# What we hope to accomplish today

- Describe the two projects
- Introduce you to the investigators
- Describe progress to date
- Ask for your input & suggestions
- Convey how you can access the resources of these two projects

IAAM

INVASIVE ASPERGILLOSIS ANIMAL MODELS

ASTEAC

ASPERGILLUS TECHNOLOGY CONSORTIUM